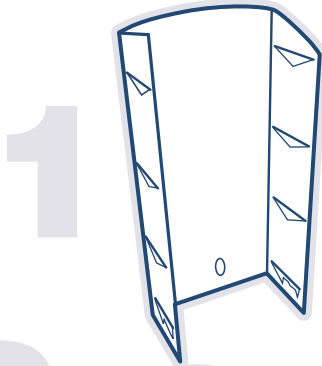
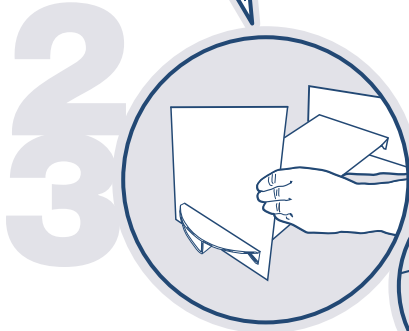


Congratulations on the purchase of your new shelves2go corrugated shelving unit. This unit is easy to assemble and should take no more than a few minutes to complete. Follow the simple instructions below, for the best result.



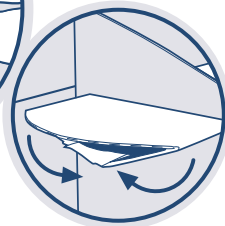
1. Take the largest piece of cardboard and fold the sides in.

- This makes up the frame of the bookcase.

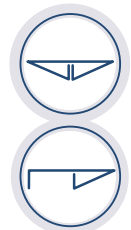


2. Next, pick up the bottom shelf.

- The only shelf that comes in a different shape.
- Once the shelf is folded, the ends should form an arrow shape that matches the shape of the cutouts on each side of the frame.
- Take shelf and slide it through the cutouts on each side of the frame.

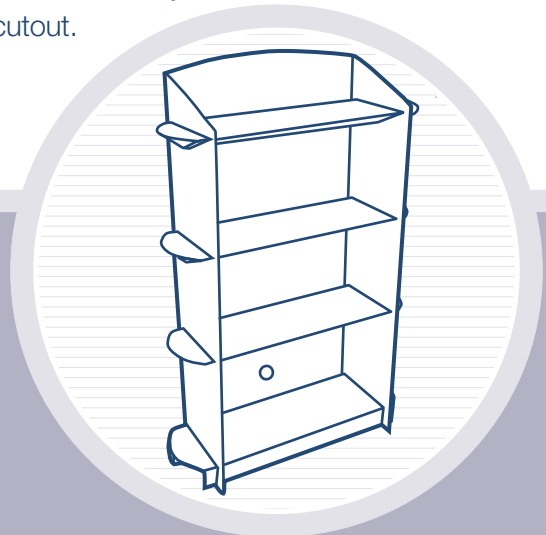


3. Fold inward all creased lines of each shelf piece.



4. The other three shelves should be folded to form a triangle shape shown on each end of the frame.

- These shelves can now easily slide through each cutout.



Your finished unit should look like this >
Each shelf is designed to hold up to 50lbs.

Visit our website for new products and product information.